



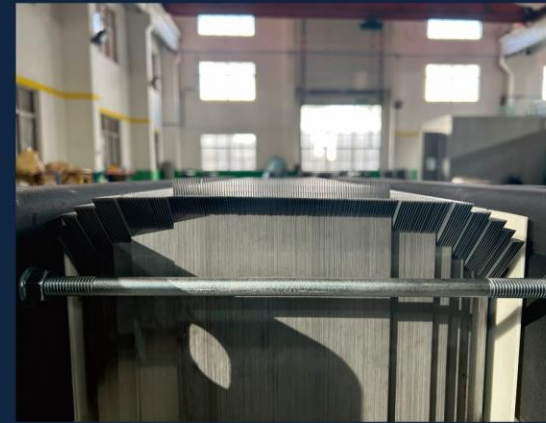
Wuxi Julong Silicon Steel CO., LTD.
无锡巨龙硅钢股份有限公司

Since 08/08/1988 www.jlxgp.com



Precisely Transformer Laminated Iron Cores

The Product We Produce, The Belief We Believe.

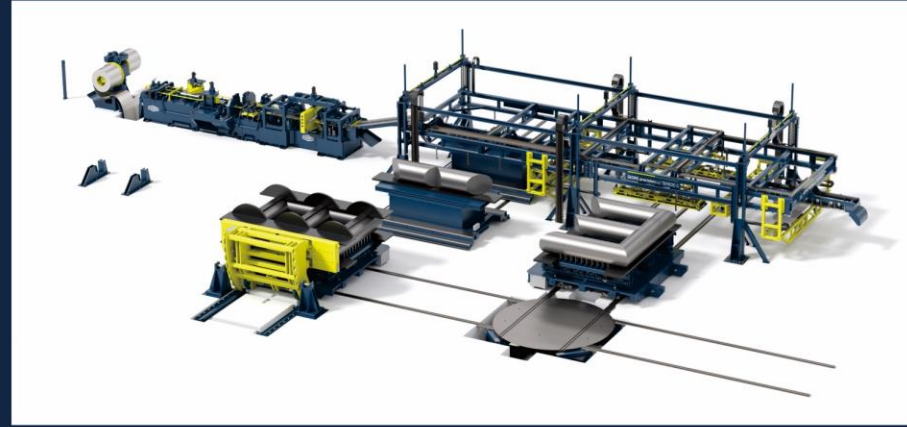


Julong-Baosteel Joint Laboratory, Member Of Baosteel Exclusive User

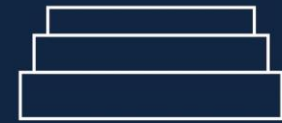


Precisely Transformer Laminated Iron Cores

The Product We Produce, The Belief We Believe.



Julong-Baosteel Joint Laboratory, Member Of Baosteel Exclusive User



Precisely Pre-Stacked Laminations

The Product We Produce, The Belief We Believe.

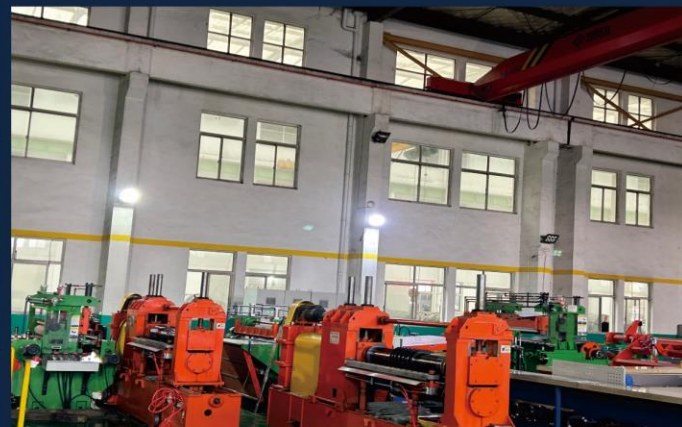


Julong-Baosteel Joint Laboratory, Member Of Baosteel Exclusive User



Precisely Pre-Stacked Laminations

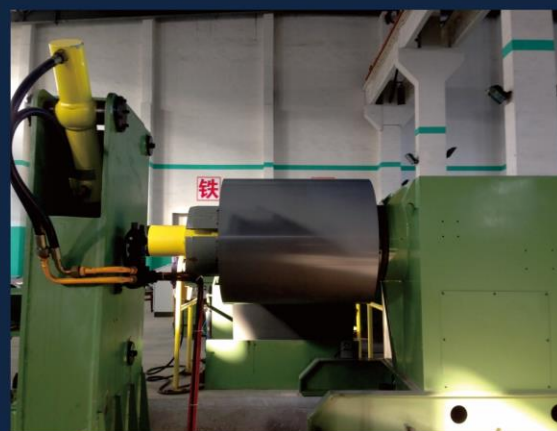
The Product We Produce, The Belief We Believe.




BAOSTEEL-JULONG Joint Laboratory
 宝山钢铁股份有限公司研究院硅钢研究所
 无锡巨龙硅钢片有限公司

联合实验室

 BAOSTEEL  巨龙铁芯



 BAOSTEEL 宝钢股份
 Beyond® 宝钢硅钢 BeCORE™ 宝钢硅钢

**宝钢股份取向硅钢
 专属用户**

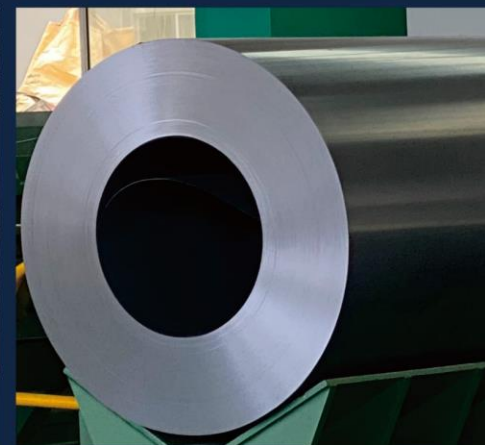
无锡巨龙硅钢股份有限公司

发证日期: 2021年 发证单位: 宝山钢铁股份有限公司

Julong-Baosteel Joint Laboratory, Member Of Baosteel Exclusive User

Precisely Slitted Silicon Steel Coils

The Product We Produce, The Belief We Believe.



Julong-Baosteel Joint Laboratory, Member Of Baosteel Exclusive User

1 Company Milestone:

- 1988. 08. 08 巨龙硅钢诞生。
08/08/1988 Julong Silicon Steel starts to serve the market.
- 2006. 03. 22 巨龙硅钢将近100亩的现代化新厂房投入运营。
22/03/2006 Julong's new modern factory has been put into use(Around 16.67Acres).
- 2014. 10 与宝钢硅钢研究所展开关于《高能效配变铁心》以及对应物联网的研究工作。
10/2014 Julong has cooperated with Shanghai Baosteel in the study area: High performance distribute transformer's iron core .
- 2015. 7 与宝钢硅钢研究所成立双方联合实验室，为实现铁心行业标准化铺平道路。
7/2013 Julong has established Joint laboratory with Baosteel.
- 巨龙硅钢在2015. 12. 28在新三板成功揭牌，股票代码：834764，为硅钢加工行业的首家上市公司。
12/2015 Julong has launched a successful IPO in China's Third market. Our stock number is 834764.
- 2017. 04 公司引进德国乔格1000, 800横剪线(最宽:1040mm, 带自动预叠模块)。
4/2017 Julong has imported Germany GEORG TBA1000 & TBA800 for supporting our customers with world first-class quality iron core OEM (Widest:1040mm,With Auto Pre-Stack Module).
- 2018. 09 巨龙硅钢获批国家级高新技术企业。
9/2018 Julong Silicon Steel becomes Chinese National level High-Tech Enterprise.

1 Company Milestone:

- 2019.12 巨龙与西安启源合作打造高速剪叠一体油浸式变压器铁心智能车间，全序列剪干式变压器铁心车间。并引入启源两剪八冲900横剪线，支持轭片加宽结构的电动400线。

12/2019 Julong has cooperated with Xian SDRI to launch the **High Speed Cutting and Automatic Stacking** oil immersed transformer core intelligent workshop (based on high speed 200 cutting lines and automatic stacking machine) and **Full Sequence Cutting and Stacking** dry type transformer core workshop (based on Full Sequence cutting and stacking 600 line). Meanwhile 900 cutting line(2 shearing and 8 punching) and new electric 400 cutting lines which support the **Widen Yoke Technique** have been put into use.

- 2022.03 巨龙与德国乔格合作打造的乔格首条电力变铁心剪叠一体柔性智能生产线开始到货安装 [GEORG | GEORG supplies power transformer E-stacker to China](#)

03/2022 GEORG's first PrecisionCut TBA 800 E-stacker has started to install.

- 2022.11 巨龙硅钢获批第一批江苏省专精特新小巨人企业[江苏省2022年度专精特新中小企业名单公示 \(第一批\)](#) (qq.com)

11/2022 Julong Silicon Steel becomes Jiangsu Province Level Specialized, Refined, and Innovative Little Giant Enterprise.

- 2022.12 智能电力变车间之纵剪与立体库模块正在升级。

12/2022 The Intelligent Power Transformer Core Workshop's Stereoscopic Storehouse and Slitting Line Module has start to install.

2 What Can Us Provide?

Abbreviations

Grain Oriented Silicon Steel :GO, Conventional grain oriented silicon steel : CGO, High permeability silicon steel : HGO, Laser scribed high permeability silicon steel : DR. Lower Noise version of silicon steel: -LM.

GO:

CGO, HGO, DR , -LM range from Brand130,120,105,100,95,90,85,80,75,70 to 65...

Service we can provide:

1. Precisely Silicon steel coil slitting products of Baosteel & WuSteel (Thickness 0.16mm~0.3mm Wideness 35mm~1250mm) 精细宝武硅钢分条产品
2. Precisely Pre-stack Laminations(Widest 1040mm) 精细预叠散片
3. Precisely Iron core's OEM (0.02MVA~480MVA Including Distribution Transformer Iron core and Power Transformer Iron core) 精密变压器铁心
4. Precisely Electrical Reactor Rectangle Laminations (Support holes) 精密电抗器方片

3.1 Why The One Is Us?

Mainly 5 reasons

- 1) 巨龙硅钢与宝钢在超薄，超厚涂层的高能效配变用取向硅钢，低噪音硅钢加工制造市场适应性领域展开深度合作：
Julong Silicon Steel and Baosteel have engaged in deep cooperation in the field of ultra-thin and ultra-thick coatings for high-energy efficient transformation of oriented silicon steel and low noise silicon steel processing and manufacturing market adaptability.
 - 1.1) Ultrathin silicon steel slitting & cutting : B20R70,B18R065,B16R055.
 - 1.2) Thick coat silicon steel slitting & cutting: B30P105-LM. 硅钢牌号齐全 Complete grades of silicon steel
- 2) 中国电力变压器铁芯领域主力供货商:客户合作广泛
Julong is one of the main suppliers in the field of distribution transformer cores and power transformer cores in China.
We cooperated with the major players in Chinese transformer market: (排名不分先后)
 - 2.1) China Electric Equipment Group 中国电气装备集团
 - 2.2) Siemens Energy
 - 2.3) ABB
 - 2.4) Schneider
 - 2.5) Toshiba
 - 2.6) Wujiang Transformer 吴江变压器
 - 2.7) Nantong HYOSUNG Transformer 南通晓星
 - 2.8) TBEA 特变电工
- 3) 巨龙硅钢是宝武的专属客户，并与宝钢硅钢研究所建有宝钢-巨龙联合实验室。2022年铁芯产量10.5万吨+。
Julong Silicon Steel is an **Exclusive Customer of Baosteel** and has established **Baosteel-Julong Joint Laboratory** with Baosteel Silicon Steel Research Institute. In 2022, the iron core OEM production exceeded 105,000 tons.
- 4) **We have the skill full professional colleagues & uptodate machines (GEORG 1000,800 & Precisioncut 800 E-stacker & high speed slitting lines with TKM system) & 47 slitting lines,cutting lines and stacking systems.**
专业团队, 设备先进, 冗余生产能力强。(冗余生产强调应对突发大规模供货需求)
- 5) 铁芯配套夹件 (Clamping System) 生产能力强 (Strong Supporting):大型电力变夹件 (Power transformer type), 干式变压器铁芯激光折弯夹件 (Laser Bending type), 油浸式变压器铁芯夹件 (Oil immersed type), 电力变开槽 laminations slotting.

3.2 关键设备参数 Key Equipment Parameters

纵剪关键设备 Key Slitting Lines Amount: 16

隔套刀具系统 Spacer tool system: 2 启源丝母刀具系统 SDRI Spindle cutting tool system: 14

设备亮点： 两条大型纵剪机装有德国隔套式刀具系统：毛刺： ≤ 0.01 宽度偏差： ± 0.05 加工尺寸 **35~1250mm**.

Equipment highlights: Two large ultraprecise high speed slitting lines are equipped with German Stripper&Spacer tool cutting system: burr: ≤ 0.01 width deviation: ± 0.05 machining size 35-1250mm

横剪关键设备 Key Cutting lines Amount: 31

支持軛加宽 support Widen Yoke Technique

GEORG TBA 800 Line: 1, TBA 1000: 1, Precisioncut TBA 800 Line: 1.

SDRI 高速电动 Highspeed200 Lines: 4, 400 Lines: 11, 600 Lines: 7, 900 Line 1; Other 400 Lines: 5.

设备亮点 设备德国乔格TBA 1000线；TBA 800线；乔格PrecisionCut TBA 800 E Stacker 柔性智能制造剪叠一体生产线。长度精度： $\pm 0.2\text{mm}$ 角度精度； $\pm 0.005^\circ$ 毛刺 $\leq 0.015\text{mm}$ ；步进：0.1。加工尺寸最宽1040mm 最长 5000mm，最窄 120mm，长宽比要大于1:1.

自动叠关键能力 Key Auto-stacking Ability (自动叠模块变压器行业全覆盖 Fully Support)

Highspeed 200 Auto-stacking: 3 (服务油变 Serve Distribution Transformer) ; 电动600穿针线Full Sequence Auto Pre-stacking: 1 (服务干变 Serve Dry Type Distribution Transformer) ; GEORG Precisioncut TBA 800 E-stacker: 1, GEORG 800 预叠模块 Auto Pre-stacking: 1, GEORG 1000 预叠模块 Auto Pre-stacking: 1 (服务电力变 Serve Power Transformer) .

3.3 铁芯加工关键能力 Key Capabilities of Iron Core Manufacturing

1 **最高电压等级** Maximum Voltage Level: 500KV (散片形式 Pre-stack Laminations) , 330KV (支持不叠上铁轭形式 Support No Upper Yoke Technique Iron Core) , 220KV (支持不叠上铁轭形式 Support No Upper Yoke Technique Iron Core) ,110KV (支持不叠上铁轭形式 Support No Upper Yoke Technique Iron Core) ,35KV, 10KV 铁芯形式 Iron Core .

2 **容量范围** Capacity Range : 0.02MVA~480MVA (20KVA~480000KVA) .

3 **最高能效等级** Maximum Energy Efficiency Level In Chinese Standard: Level 1.

4 **应用范围**: 油浸式配电变压器铁芯, 干式变压器铁芯, 电力变压器铁芯, 特种变压器铁芯 Application Scope: Oil Immersed Distribution Transformer Core, Dry Type Transformer Core, Power Transformer Core, Special Transformer Core.

5 **全面支持薄硅钢产品的纵剪, 横剪, 叠片, 铁芯**
Fully support slitting coils, cutting, pre-stack laminations, and iron cores of thin silicon steel products(i.e. 65,70,75).

6 **峰值稳定供货应用高牌号硅钢油浸式配变, 干变3413台/月, 月均总配变铁芯产能11700台+/月, 电力变铁芯产能 三相三柱型式 350台 / 月 或 三相五柱型式 120 台/月 。**

Peak stable supply High Energy Efficiency type oil immersed distribution transformers and dry type distribution transformers' iron cores : 3413 units/month. The monthly average total distribution transformer core production capacity is **11700 units+/month**, and the power transformer core production capacity is **350 units / month** for the three-phase three column type or **120 units / month** for the three-phase five column type.

4 荣誉产品一览 Proud Products



5 Welcome to visit us and find more





巨龙铁芯 中国信心

The Product We Produce, The Belief We Believe.

Cheers!





Contact Person: Tom Zhang (张琪 Zhang Qi)

Address: No. 28, Jingang Avenue, Donggang Town, Xishan District, Wuxi City, Jiangsu Province, PRC

Email: zhangqi@jlxgp.com ; wuxijulong@yeah.net

Tel:+86 0510 83793888

Mobile:+86 13812183888

FAX:+86 0510 88601078

WeChat public account: Wuxi Julong Silicon Steel Co., Ltd

QQ: 470078451

All Rights Reserved By Wuxi Julong Silicon Steel Co.,Ltd.